



# Airport Transit Connection Update

## Port of San Diego - Board of Port Commissioners

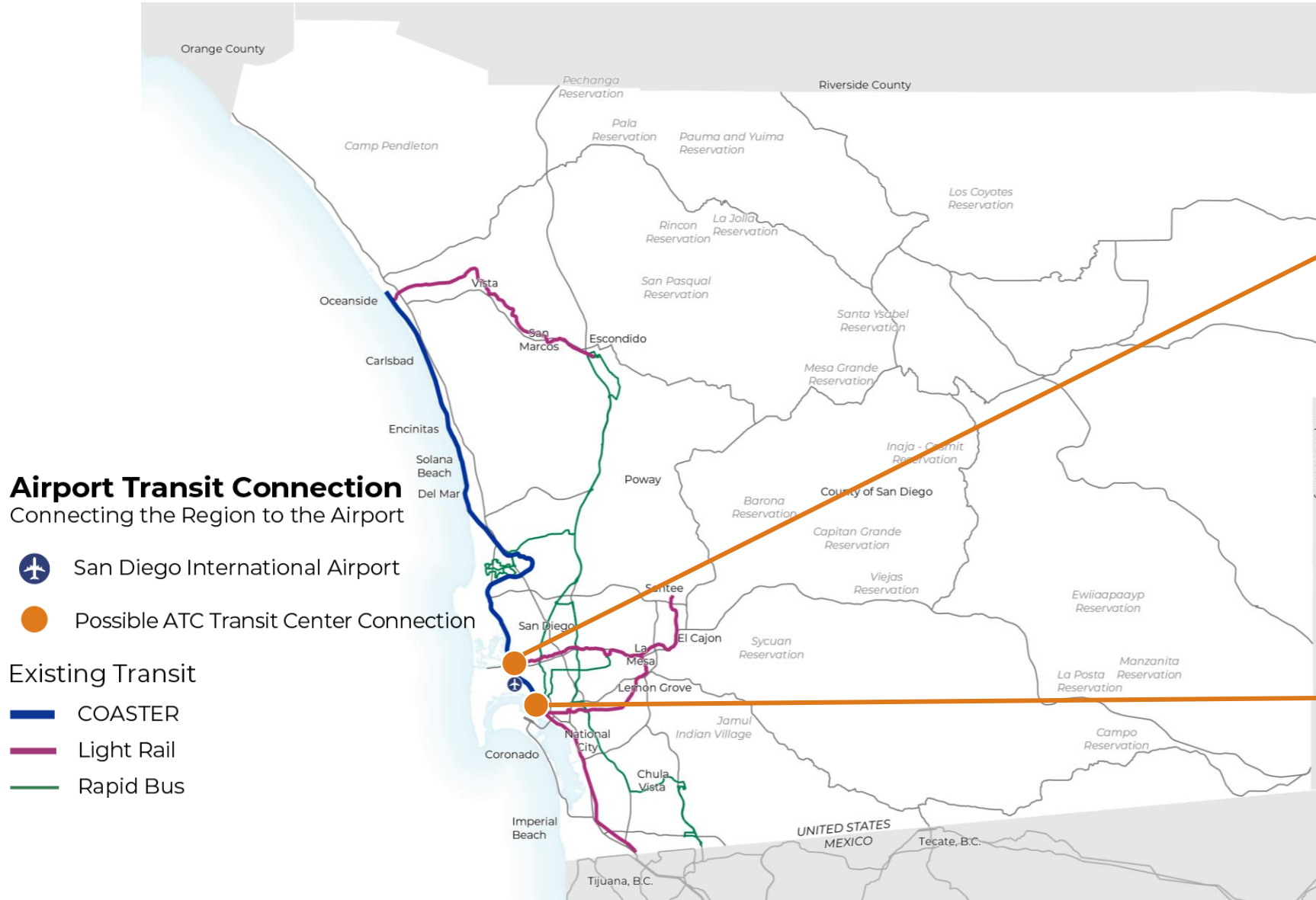
Marisa Mangan | Senior Regional Planner  
February 11, 2025

# Airport Transit Connection



# Regional Level Considerations

## Connecting to Existing Regional Rail Network



Old Town Transit Center



Santa Fe Depot



# Airport Transit Connection - Modes Considered



**Automated  
People Mover**



**Light Rail Trolley  
Extension**



**Enhanced  
Bus Service**

# Automated People Mover Concepts

Five people mover concepts with 13 total variations



# Trolley Concept Updates

- Concept 6a – Operational modeling in process
- Concept 6b – Trench extension concept variation added

## AIRPORT TRANSIT CONNECTION Concept 6: Light Rail Trolley Extension

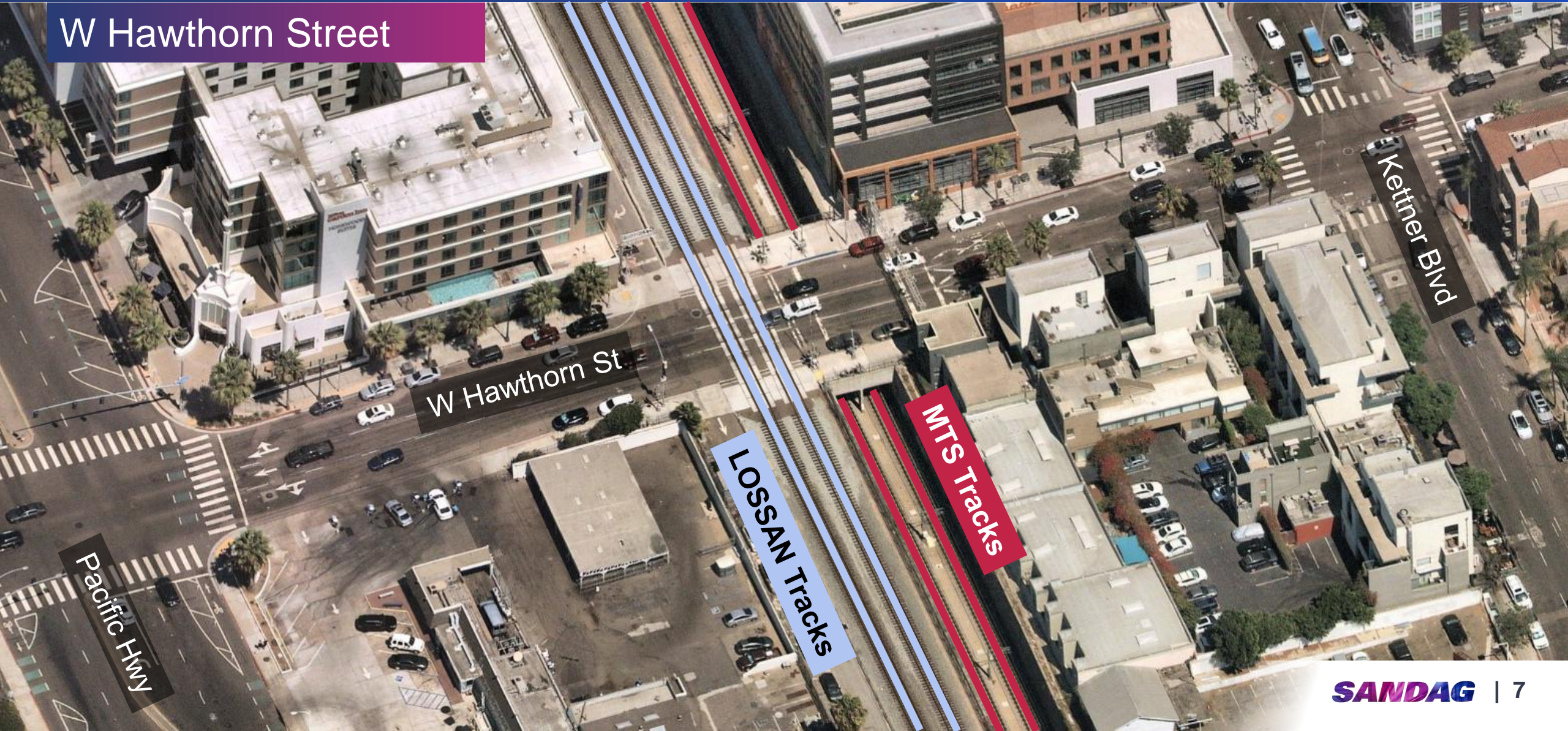


\*The location of the County Center/Little Italy Station is still being evaluated for Trolley Concept 6b.

# Trolley Concept Updates

## W Hawthorn Street & W Ash Street Existing Conditions

W Hawthorn Street



W Hawthorn St

Kettner Blvd

Pacific Hwy

LOSAN Tracks

MTS Tracks

# Trolley Concept Updates

## W Hawthorn Street & W Ash Street View

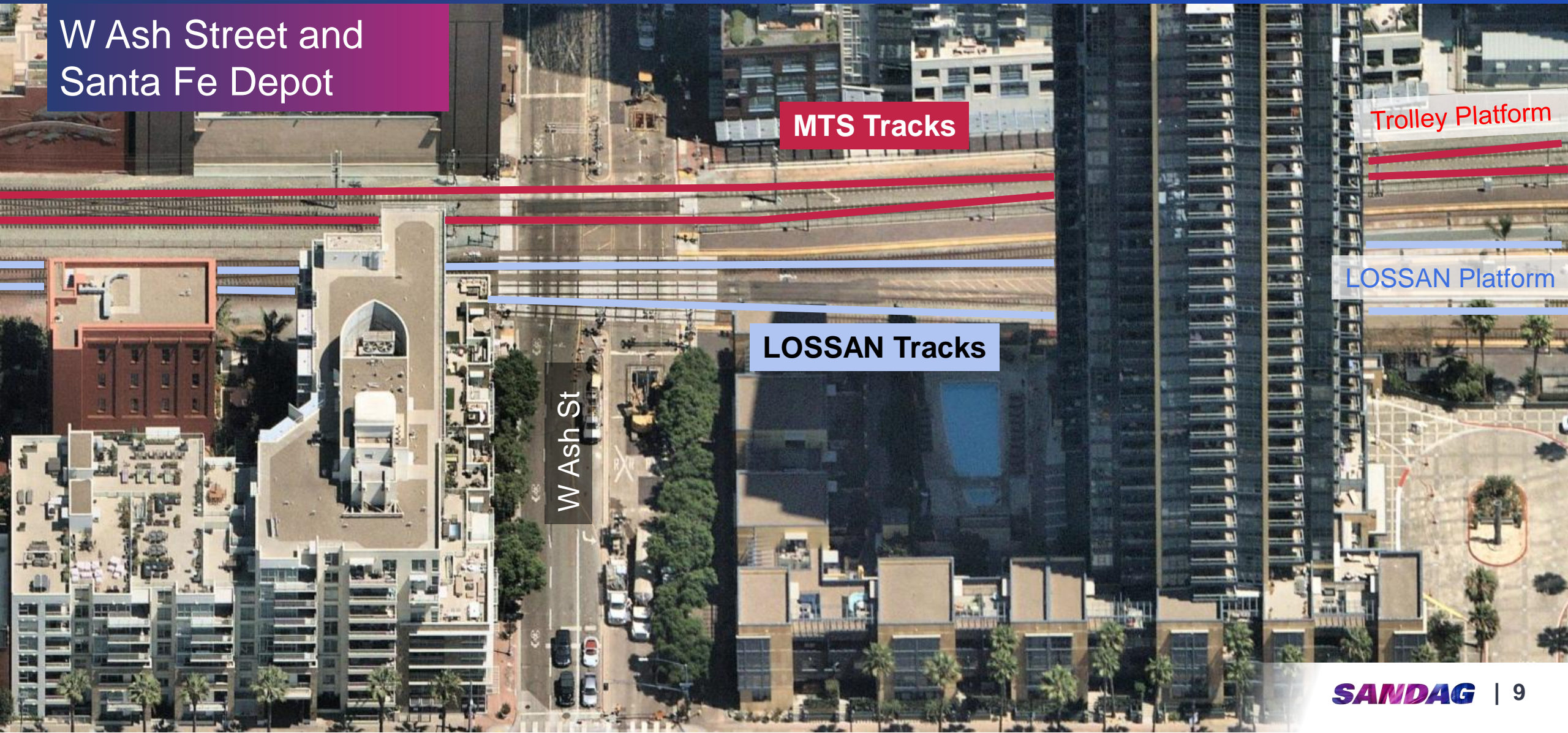
### W Hawthorn Street





# Trolley Concept Updates

## W Hawthorn Street & W Ash Street Existing Conditions



W Ash Street and  
Santa Fe Depot

MTS Tracks

Trolley Platform

LOSSAN Platform

LOSSAN Tracks

W Ash St

# Trolley Concept Updates

## W Hawthorn Street & W Ash Street View

W Ash Street



# Enhanced Bus Opportunities

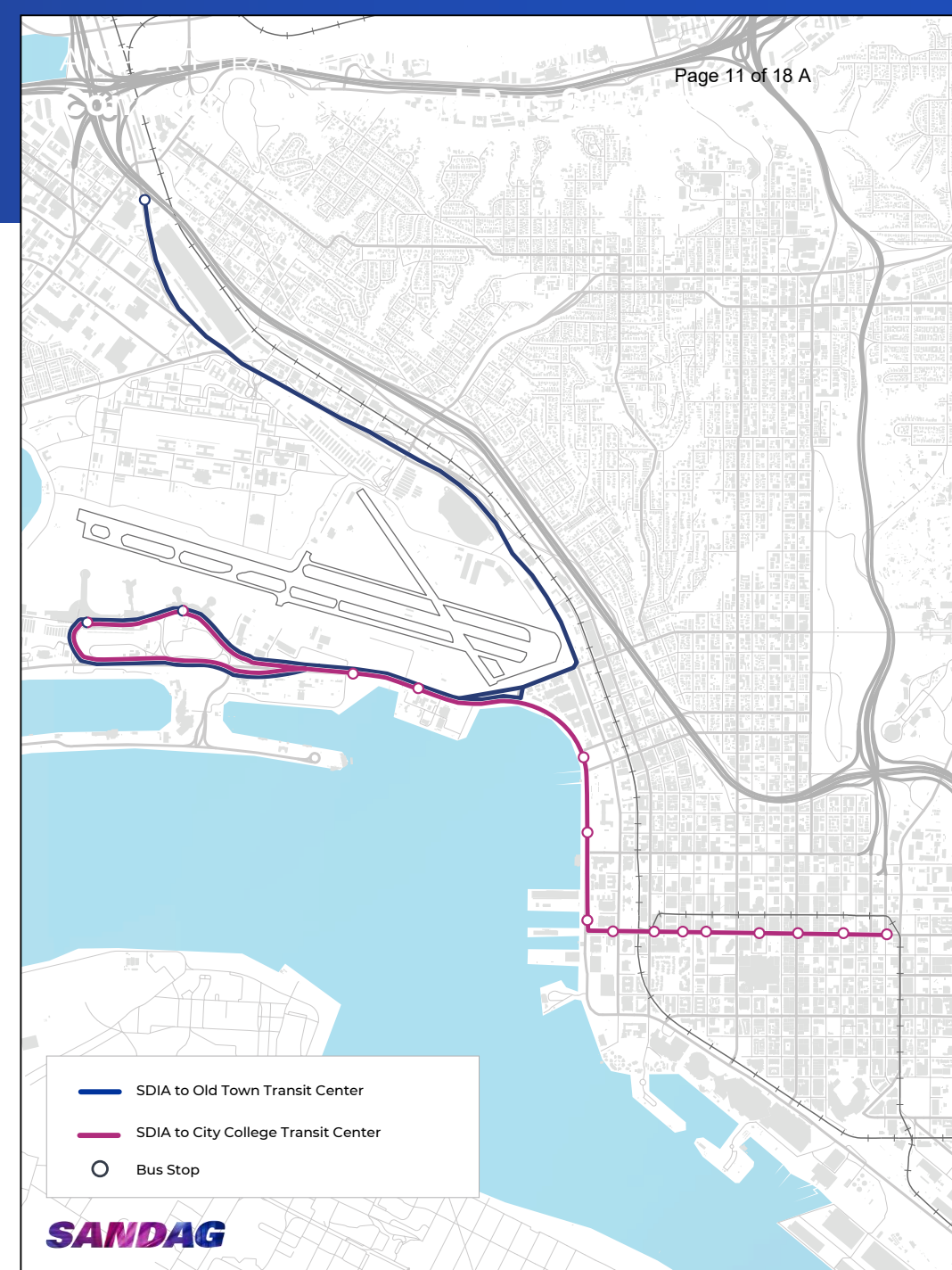
## Proposed Approach

- **Near-Term**

- Terminal 1-Phase 1A opening
- Work with MTS and SDCRAA to increase Route 992 and San Diego Flyer frequency

- **Mid-Term**

- Terminal 1-Phase 1B opening
- Implement bus priority solutions between airport, Downtown, and Old Town
- Interim strategy prior to ATC rail connection



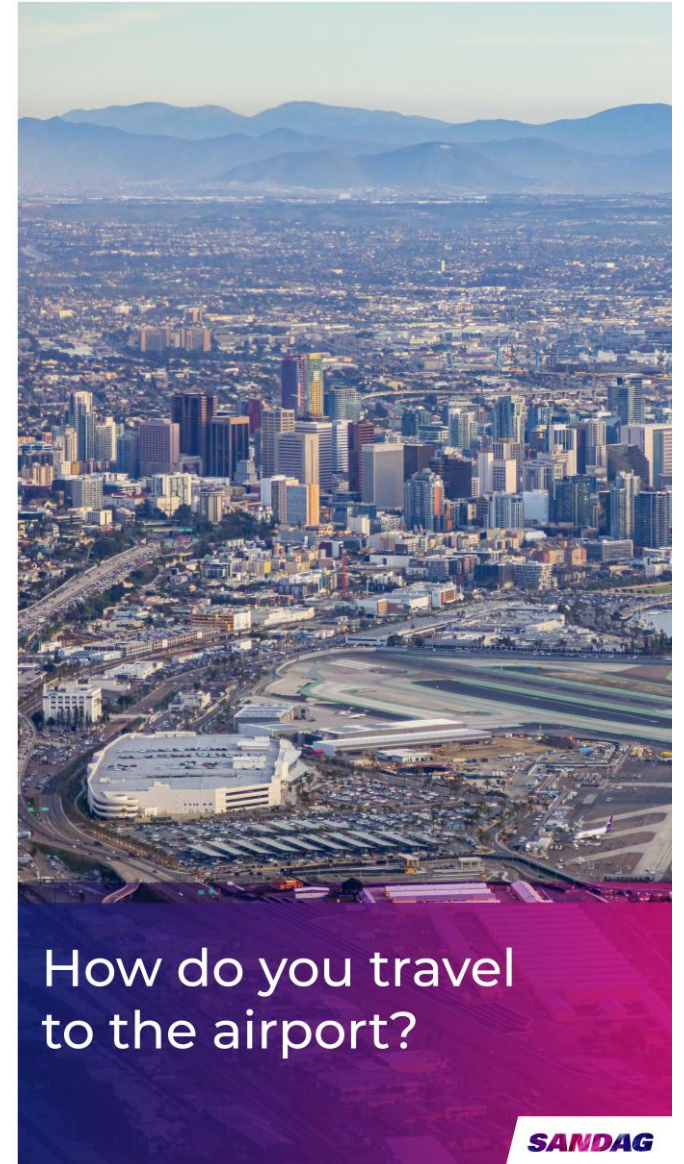
## Proposed Pare Down Approach for Rail

- Eliminate two people mover concept variations that require either new heavy rail platform or direct access ramp in Middletown
- Evaluate 13 remaining ATC rail concept variations based on a variety of termini and station access metrics including airport travel survey results
- Assess south-leg only people mover options, consider infrastructure requirements for all variations, and update costs to 2024 dollars
- Reduce to a smaller, refined set of concepts that advance to environmental review

# Airport Travel Survey

Fall 2024

- Collected post-pandemic data on how residents, visitors, and employees travel to/from the airport.
- ~4,500 survey responses collected at SDIA terminals and onboard shuttles/buses
  - Intercept/face-to-face interviews (~3,900 responses)
  - Online, self-administered survey (~600 responses)
- Survey data will update the SANDAG transportation model and inform the ATC planning process



How do you travel to the airport?

# Intercept Survey

## Preliminary Insights\*

### Survey Period

October 4-  
October 18

### Survey Responses

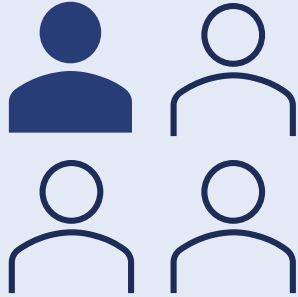


Collected  
**3,900**

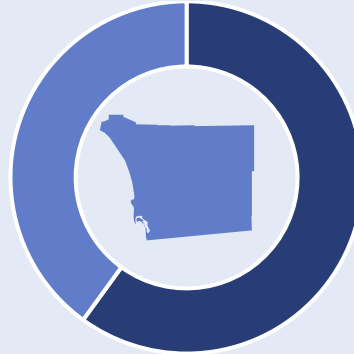


Goal  
**3,450**

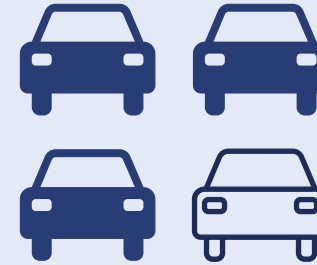
### Survey Respondents: Residents, Employees, Visitors



~1 in 4 were  
**interested** in the  
optional survey



~60% **visitor** &  
40% San Diego  
County **resident**



Nearly **75% drove themselves** or  
**were dropped off**  
by someone or a  
taxi/TNC



**99% of sampling goal** for San Diego  
Flyer and MTS route  
992 riders achieved

### Approximate Breakdown of Trip Purposes



~70% Non-Business/Personal



~30% Business/Work-Related

\*All results are provisional and subject to change

# Stakeholder Engagement Outlook

Fall 2024–Fall 2025

## Continued collaboration with partner agencies

- Regular project planning and public affairs touchpoints
- Joint partner agency workshop
- Partner agency board updates

## Public outreach

- Regional and urban core perspectives
- Stakeholder meetings
- In-person and online activities
- Environmental public scoping meetings



# Partner Agency Board Discussion Highlights

- Overall support for connecting to existing regional transit hubs
- Partner agency collaboration on near-term solutions
- Practical pare down approach for the ATC rail options
- Well-rounded public engagement approach
- Peer agency research and current practices
- Acknowledge each mode has opportunities and challenges



## Spring–Summer 2025

- Publish airport travel survey report
- Update model with airport travel survey data
- Partner agency pare down workshop
- Public input: regional & urban core perspectives
- Start mid-term enhanced bus assessment

## Fall–Winter 2024

- Complete airport travel survey and analyze data
- Trolley concept refinements
- ATC concept variation pare down
- Near-term enhanced bus assessment
- Update Board, Transportation Committee, Working Groups

## Fall–Winter 2025

- Release notice of preparation (NOP) and begin CEQA process
- Hold public scoping meeting(s)
- Implement near-term enhanced bus service
- Continue mid-term enhanced bus assessment

# Stay connected with us

-  Sign up for emails  
[SANDAG.org](https://www.sandag.org)
-  Follow us on social media  
[@SANDAGregion](https://twitter.com/SANDAGregion) [@SANDAG](https://twitter.com/SANDAG)
-  Send us an email  
[atc@sandag.org](mailto:atc@sandag.org)