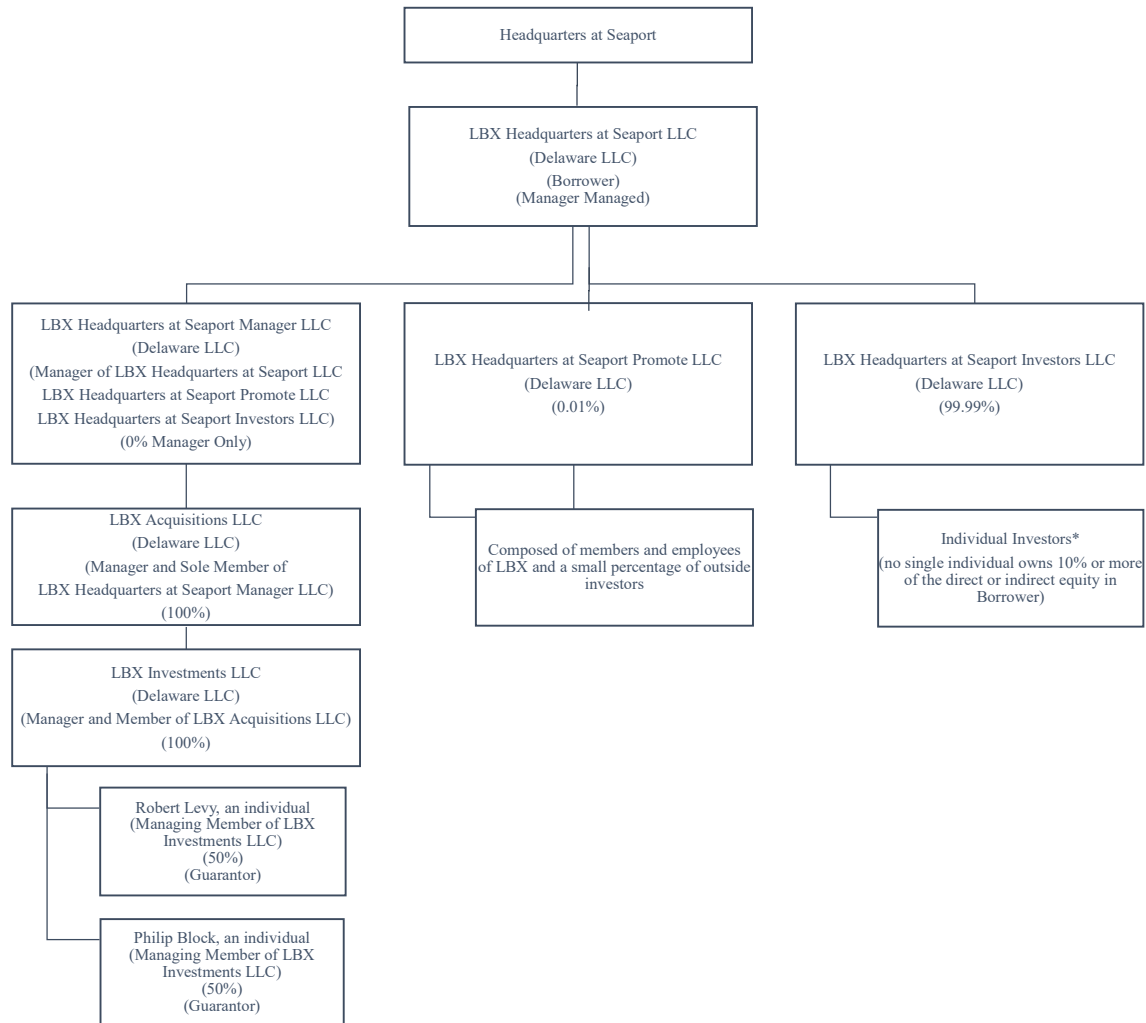


Attachment C to Agenda File No. 2025-130  
**LBX Headquarters Ownership Structure**

Page 1 of 1 C

***LBX Headquarters at Seaport Org Chart***

---



\* Partners of LBX Acquisitions will contribute a minimum of 3% of the equity for the project through an investment in LBX Headquarters at Seaport Investors LLC